



MONTHLY MEMBERSHIP PROGRESS REPORT

District 1 D

Results as of: 04/30/2018

GMT: STEVE ANTON

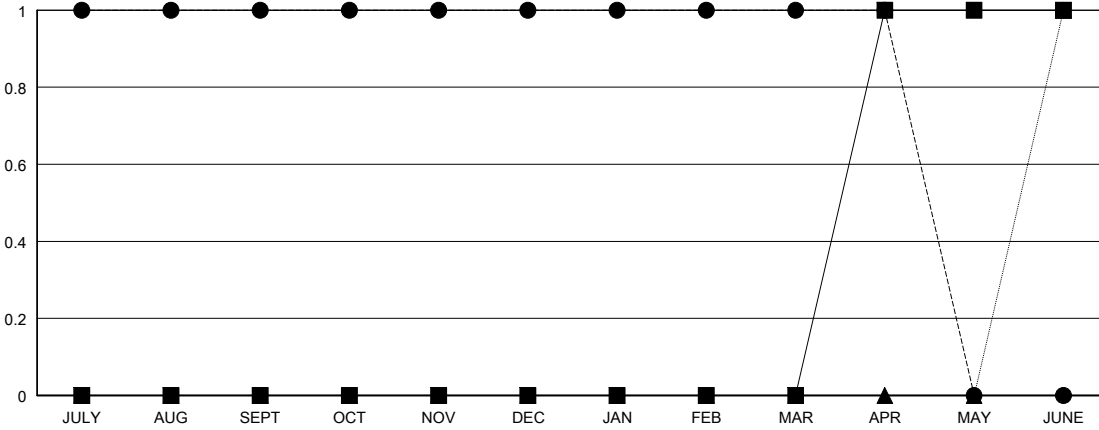
LOCATION ILLINOIS

GMT CA

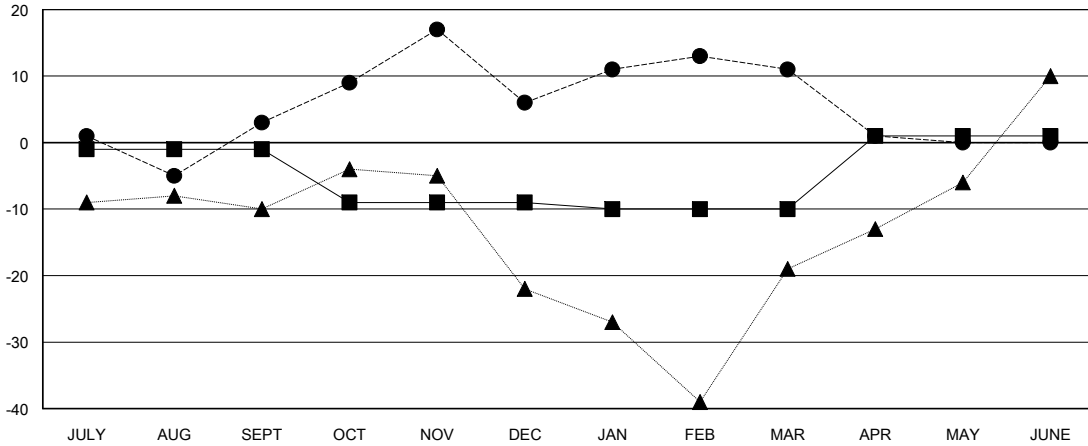
Clubs			
RESULTS FOR 2017-2018			
QUARTER	NEW CLUB GOAL	NEW CLUBS	DROPPED CLUBS
JULY/AUG/SEPT	0	1	1
OCT/NOV/DEC	0	0	0
JAN/FEB/MAR	0	0	0
APR/MAY/JUNE	1	0	0

Members			
RESULTS FOR 2017-2018			
QUARTER	MEMBER GROWTH NET GOAL	MEMBER GROWTH ACTUAL	DROPPED MEMBERS ACTUAL (including transfers)
JULY/AUG/SEPT	-1	63	58
OCT/NOV/DEC	-8	45	40
JAN/FEB/MAR	-1	46	39
APR/MAY/JUNE	11	7	17

GOALS AND ACTUAL NEW CLUBS CUMULATIVE



GOALS AND ACTUAL MEMBERS CUMULATIVE



DROPPED CLUBS: 1	40 CLUBS OF 56 ADDED 1 OR MORE NEW MEMBERS	<u>GENDER DISTRIBUTION</u>
DROPPED MEMBERS	CLICK HERE FOR CUMULATIVE MEMBERSHIP DATA	MALE 1,354 (72.64%)
DECEASED 33		FEMALE 510 (27.36%)
CLUB CANCELLED 0	TOTAL FAMILY UNIT MEMBERS 318	
OTHER 121	FAMILY MEMBERS PAYING HALF DUES 160	
TOTAL 154		